



PROJECT REFERENCE: Miles Street

PRODUCTS/ SYSTEMS: Paromelt Hot Melt Liquids & Enkopur Cold Applied Liquids

PROJECT OVERVIEW: Moy Enkopur Inverted Roof System with Jablite EPS Insulation and a MUGA Sports and Paving Roof coverings for roof amenity spaces.

COMPLETION DATE: June 2021



Miles Street

BACKGROUND

The £200 million Downing's Miles Street development in Lambeth incorporates 841 student bedrooms, an office space and community leisure facilities in the heart of the capital's thriving Vauxhall district.

This mixed-use development comprises of two buildings of 37 and 6 storeys which is topped off with an inverted roof for PV and a 37th floor communal terrace.

These stunning buildings have an open, accessible and welcoming reception area and a café on the ground floor. As you go higher, there is also a gym and a multi-use rooftop area which offers outstanding leisure options for student residents and the local community.

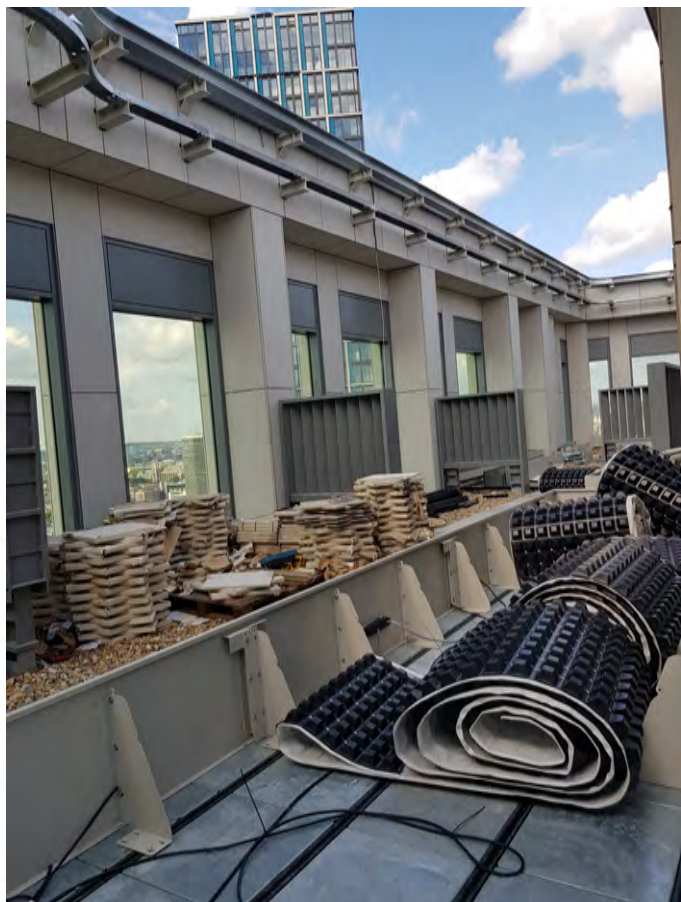
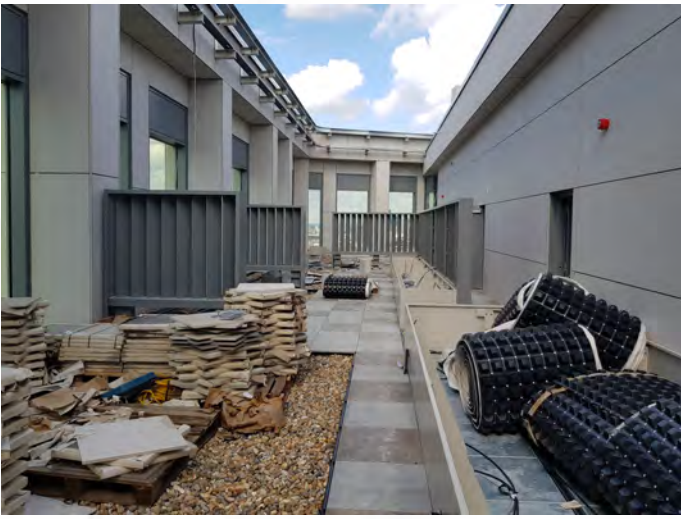
The new buildings have increased space for pedestrians along Miles Street with high-quality landscaping around the site transforming it into an attractive pedestrian route.

CHALLENGES

To complete the project extensive coordination with other trades especially the cladding system contractor due to the very limited space on the terrace, works were often undertaken late into the evening to allow other trades to work the following days on their areas.

SOLUTION

After over a year of design work on project working with fire consultants to ensure the terrace and MUGA roof were fully compliant. The roof was finished with a very stylish porcelain tile rail system, bespoke planters and custom support system along with unique furniture designed specifically for the project.



WATERPROOFING SYSTEM SUPPLIERS