

Technical Data Sheet

Spray-Applied EPDM/TPO Membrane Adhesive (Q2001)

Description:

Spray-Applied EPDM/TPO Membrane Adhesive is a high-performance contact adhesive formulated specifically for bonding plain EPDM and TPO flat roofing membranes to a variety of roof decks, including concrete, most insulation boards, plywood and cementitious boards. It is particularly good for large area work however, it can be used for detailed areas where smoothness of the membrane is critical.

Benefits:

- Fast high tack.
- Resistant to blistering immediately after application.
- Excellent green strength and high heat resistance.
- Single product for main field areas and detail work.

Substrates:

Suitable for*:

Concrete, timber, tissue-faced PIR, mineral wool.

Membranes suitable for*:

Plain unbacked EPDM or TPO/TPE membranes.

Substrate quality: The substrate must be solid and in a suitable condition prior to adhering and be able to resist any wind forces.

* Adhesion tests should be carried out prior to use. Applications only for substrates and membranes listed. All others should be tested prior to use.

Please contact MOY Technical Services for further guidance.

Certification:



Technical data:

Shelf Life:	18 Months
Appearance:	Clear
Temperature Resistance:	-30°C - 105°C
Solvent System:	Dichloromethane
Coverage:	80m ²
Solids:	28% - 33%
VOC Content:	540.9 grams per litre
Storage:	5°C - 25°C



Technical Data Sheet

Spray-Applied EPDM/TPO Membrane Adhesive (Q2001)

Application:

Application type:	2-sided spray applied.
Open time:	40 mins.
Flash-off time:	1-2 mins.
Spray type:	Web spray.
Gun type:	Field Gun for field areas (Detail Gun for detail flashings)
Hose type:	4m / 8m black rubber hoses available
Square metre coverage:	22ltr = 80m ²

- This product is designed to be applied to two surfaces to be bonded together. For best results, the temperature of the adhesive and the surfaces being bonded should be between 16°C - 27°C.
- Use with adequate ventilation. When possible we recommend shaking the canister well before using.
- Attach and secure hose tightly onto the spray gun with required tip. Attach the other end of the hose onto the canister. Make sure the hose-valve connections are securely tight. Open the valve on the canister slowly and fully, check for leaks during this process. Unlock the trigger on the spray gun to start spraying.
- Prior to use, check compatibility by spraying a small test patch of the adhesive on the substrate. This product may degrade some substrates.

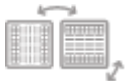
1. Make sure that surfaces are clean, dry and free from dirt, dust, oil, loose paint, wax or grease, etc



2. Spray about 10-20 cm away at a 90° angle to the surface, with 50% overlaps applying a uniform, even coat of adhesive to obtain 80% - 100% coverage of the surface. If necessary, spray another coat of adhesive in areas that appear to need more.



3. Spray both surfaces to be bonded, one surface vertically and the other surface horizontally.



4. Allow 1 - 2 minutes for the adhesive to tack off until no adhesive transfers to the knuckle when touched.



5. Adhere surfaces and press together with adequate pressure. A roller is recommended to apply a uniform pressure to achieve maximum strength. Allow 24 hours for the adhesive to fully cure.

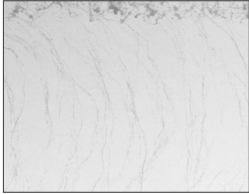


6. If the spray tip clogs, unscrew the spray tip from the gun and clean with solvent such as lacquer thinner or acetone. Do not use a pin on the spray tip.

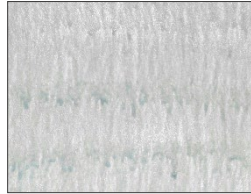
Technical Data Sheet

Spray-Applied EPDM/TPO Membrane Adhesive (Q2001)

Coverage:



Too Light



Too Heavy



Correct = 20 dry gms/m²

Temperature and timings:

All information on temperature and timings represent normal working conditions and is provided as a guideline only. However, please contact MOY Technical Services for advice if you wish to operate outside of these parameters.

Storage & Handling:

- Consult Safety Data Sheet prior to use.
- DO NOT store at temperatures over 50°C.
- Avoid exposure to direct sunlight.
- DO NOT store directly on concrete floor.
- For optimum performance, store at 18°C during use, but must always be above 10°C.
- When connected, keep valve open and hose pressurised at all times.
- DO NOT close valve until ready to connect to new cylinder.
- Release pressure in hose before disconnection.
- Always test product to determine suitability for your particular application prior to use in production.

Canister Storage/Changeover:

Turn valve on canister into the OFF position, spray out remaining adhesive left in the hose, disconnect the spray hose and gun from the canister. Reconnect the spray hose to a canister of cleaning solvent (sold separately) and spray out until liquid is clear which indicates that the hose and gun is clean.

If you choose to leave the hose and spray gun on the canister, leave the valve on the canister OPEN. Do not disconnect the hose/gun from the canister. CLOSE and LOCK the spray gun.

Disposal:

Information for this product is given in the Safety Data Sheet.